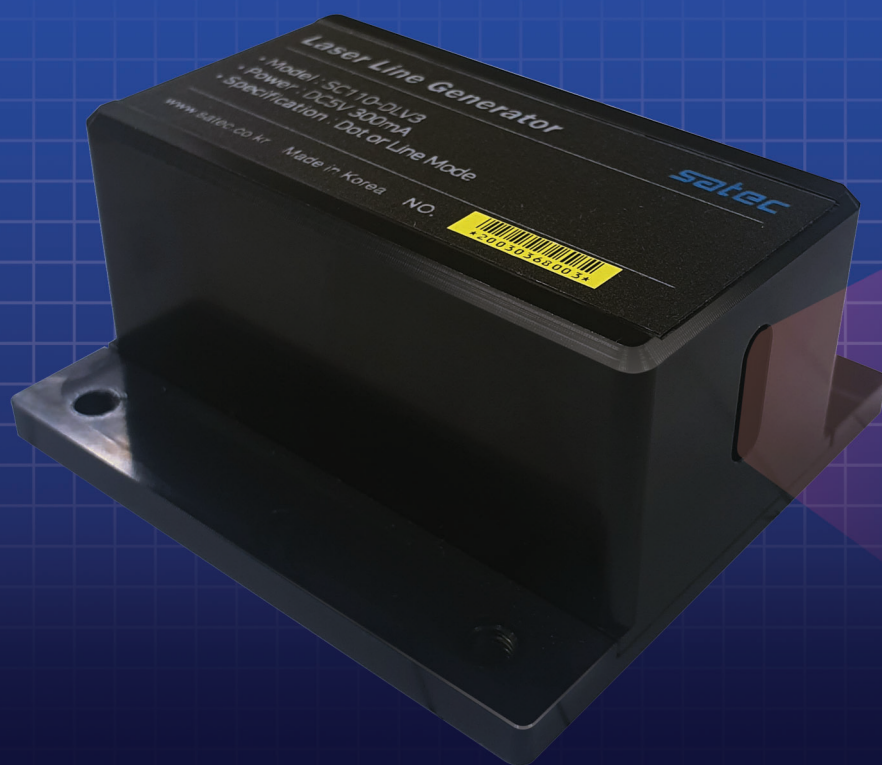


LASER LINE GENERATOR

SC110-DLV3



satec

Description

SC110-DLV3은 Dot Type Laser Pointer를 Line의 형태로 변환 시켜주는 모듈로써, Laser 를 Dot 및 Line 형태로 표시할 수 있다.

이 모듈은 모션 컨트롤러(SC116-MCV2)에 의해 구동되는 모듈이다.

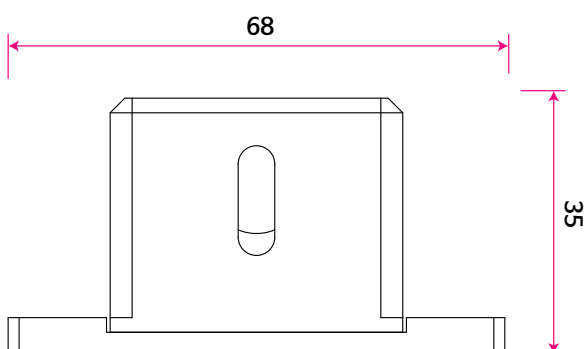
Introduction

- Dot Laser Pointer mode
- Line Laser Pointer mode

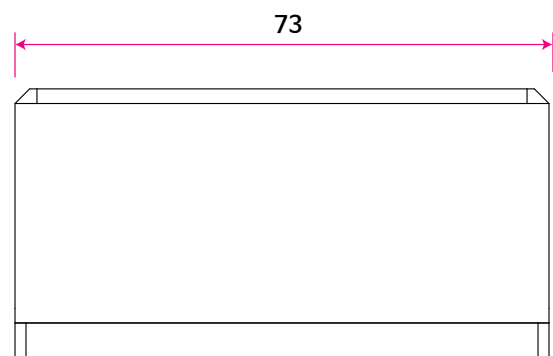
Specifications

| | |
|--------------------|---|
| Laser Color | Green Clolor |
| Input | Power, Laser On/Off Signal, Line Mode On/Off Signal |
| Laser Pointer Mode | Dot Mode, Line Mode |
| Dimension(mm) | 68(W) X 73(H) X 35(D) |

Dimension



FRONT



SIDE

